

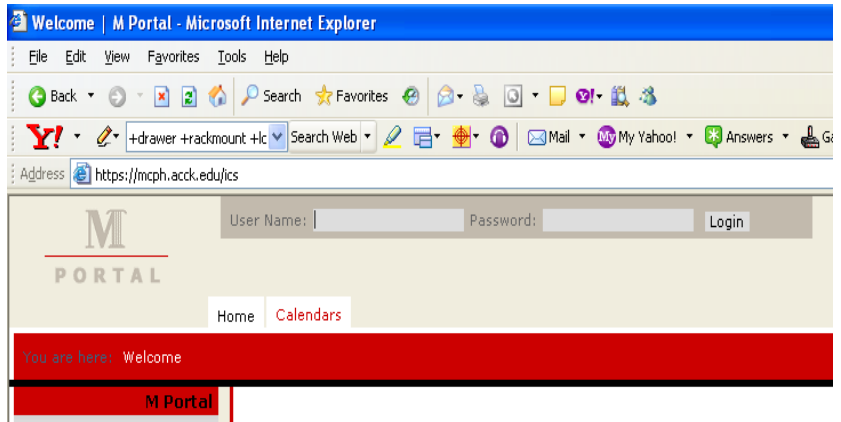
McPherson College uses the JICS (Jenzabar Internet Campus Solution) and LMS (Learning Management System).

To access your LMS information, you must first login into JICS. Please follow the instructions provided below.

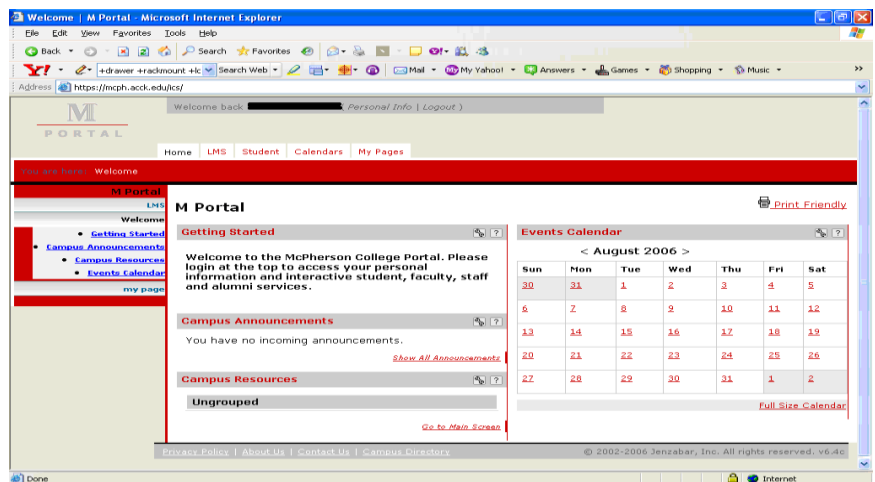
JICS is accessible at <https://mcph.acck.edu/ics>

To login to JICS:

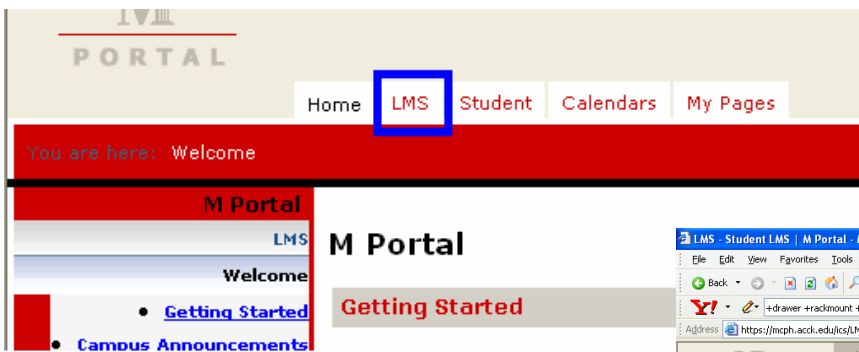
- 1) Go to <https://mcph.acck.edu/ics>
- 2) Enter your student email userid into the “User Name” field.
 - a. Email userid’s are normally: <first four characters of your last name followed by the first three characters your first name>. For names that conflict with past McPherson College student users, a “00X” is added to the name.
 - b. John Smith, would thus be “smitjoh”. The next John Smith will be “smitjoh001”
- 3) Your initial password for JICS is the first character of your first capitalized and the first character of your last name (lowercase), followed by the right most 6 digits of your student ID number. So, for John Smith, ID # 00098786, the password would be “Js098786”
- 4) Computer Services recommends that you change your password for JICS after logging in.
 - a. At the top of the page, to the right of your name, click on “Personal Info”
 - b. Then click on the “Password” tab
 - c. Enter your old password and then enter your new password.
 - d. Select “Save”
 - e. If for some reason you forget your password, you can request a password reset after a failed login attempt.
 - i. The system should automatically reset your password and email you the new, temporary password.
 - ii. After a password reset, please change you password back to something you can remember.
- 5) Click on the “Login” button



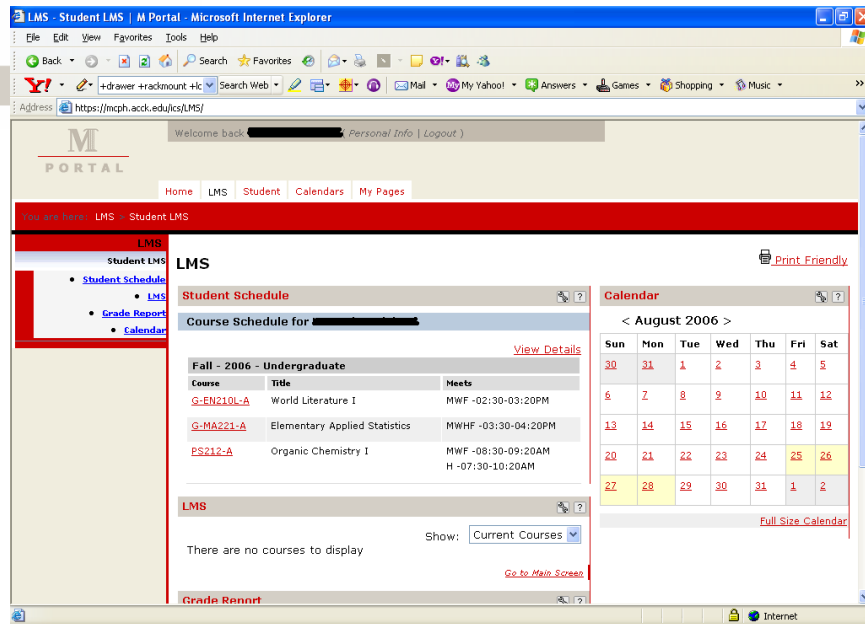
The opening screen after login should look like the picture to the right.



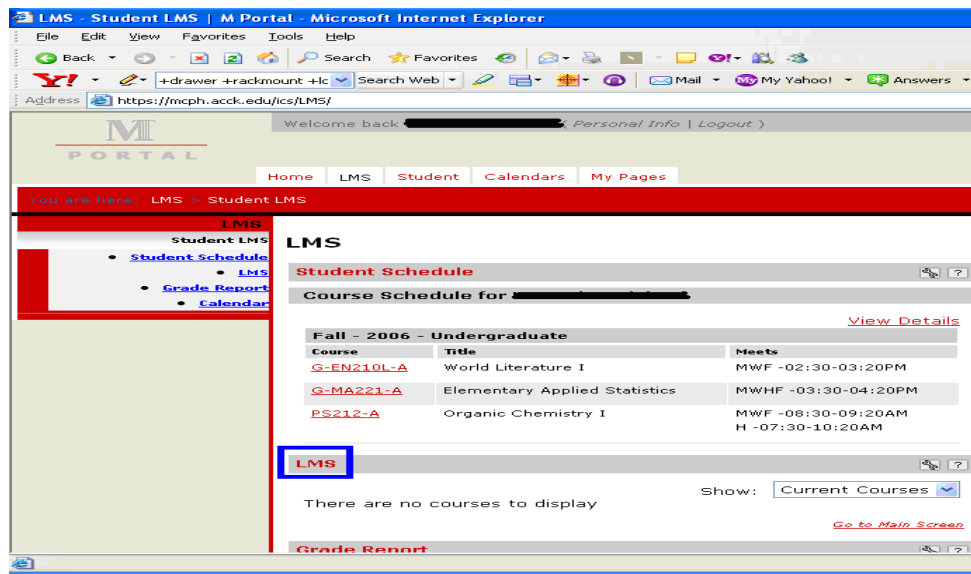
To Access LMS, click on the LMS tab



The LMS page will open up and look similar to the picture below:



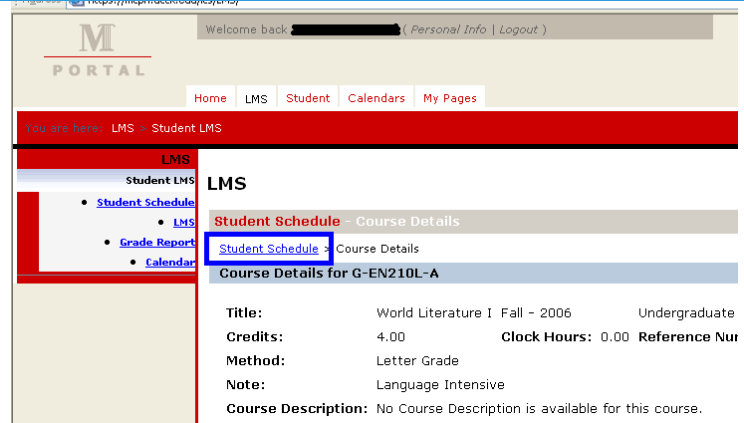
All courses that you are enrolled in should be displayed in Course Schedule section. You may select a course for information on that course. Not all courses will contain LMS.



In the LMS section (highlighted with a box to the right) you will see courses that you are enrolled in, that have resources available. Click on the desired course.

Hints for navigating JICS and LMS:

- the BACK button does not work, instead, you are provided with weblinks know as “breadcrumbs” which show where you are at as well as providing a link to the previous webpage. For example, the picture to the right shows information on the World Literature 1 class. If you want to return to



- your Student Course Schedule, you will need to click on the “Student Schedule” link, highlighted below.
- The web pages are set to time out after a few minutes of inactivity. You will need to log back into JICS before you can continue.
 - If you are having problems in JICS or LMS, please send help requests to jicshelp@mcperson.edu

These instructions, as well as other information on services provided to students by McPherson College can be found at <http://wwwi.mcperson.edu/compserv>