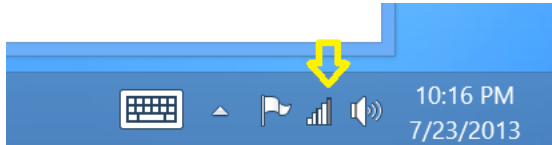
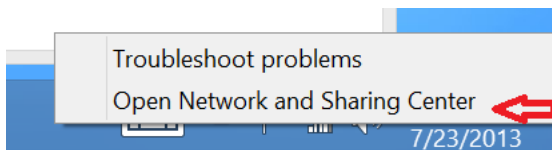


## Windows 7 Setup to Connect to “MC 802.1x”

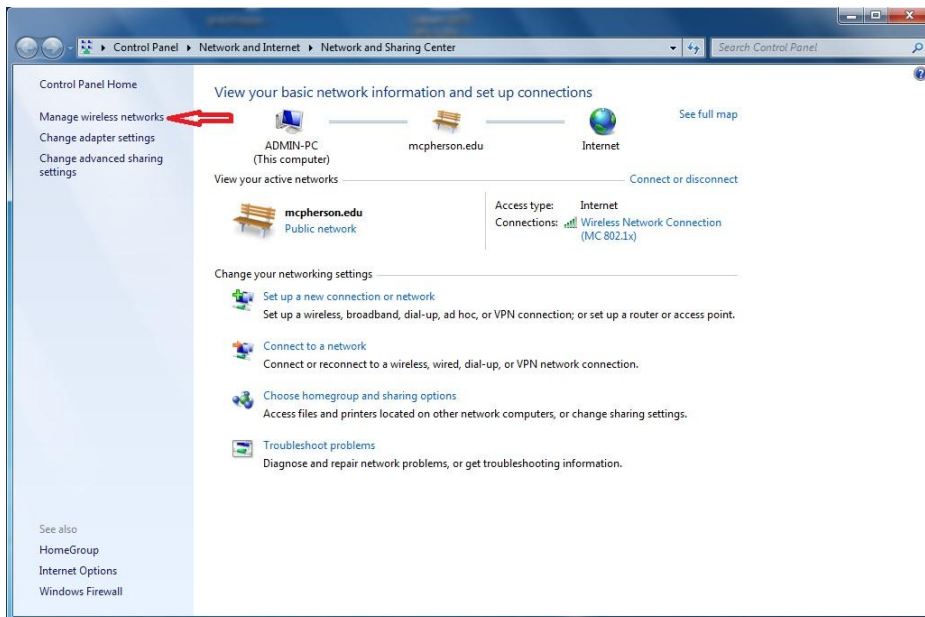
Go to your Desktop display and find the wireless icon in the bottom right corner by the time/date display. With your mouse, right-click on the icon (with a touch-only display, do a prolonged touch on the icon) to get the pop-up menu.



Select “Open Network and Sharing Center” from the pop-up menu.



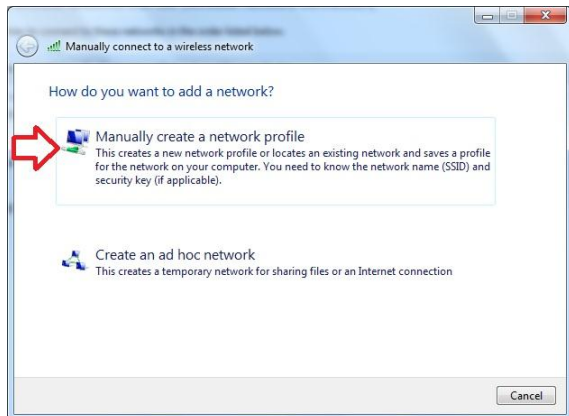
We need to create a new wireless network profile, so select “Manage wireless networks”.



Click “Add” to add a new wireless profile.

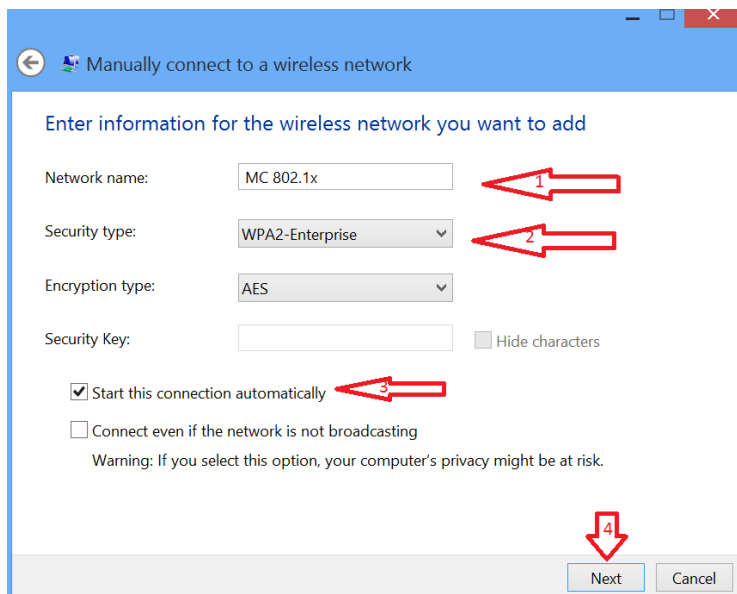


Select “Manually create a network profile”.

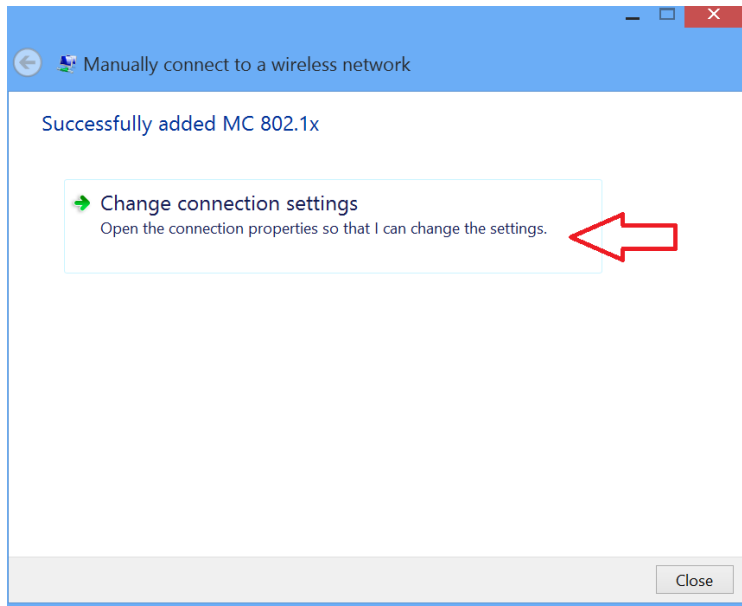


Fill in the properties

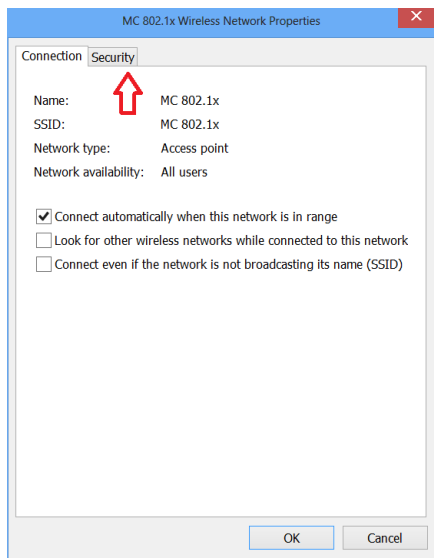
- 1) “MC 802.1x” for “Network name”
- 2) Select “WPA2-Enterprise” from the “Security type” drop-down box
- 3) Enable “Start this connection automatically” (probably already done for you)
- 4) Click “Next”



We need to make specific configuration changes, so select “Change connection settings”

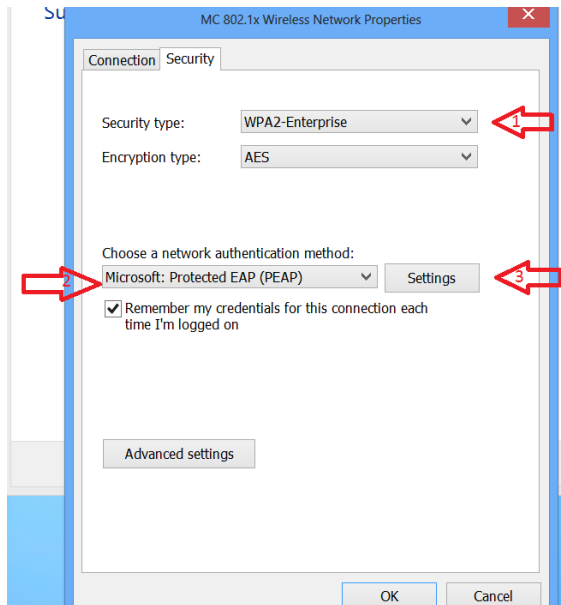


Select the “Security” tab on the Wireless Network Properties page



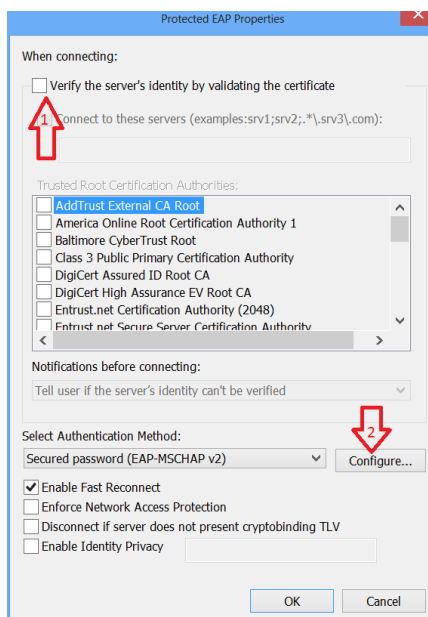
Change the property settings on the page

- 1) Select “WPA2-Enterprise” for “Security type” (probably already set)
- 2) Select “Microsoft: Protected EAP (PEAP)” in the “Choose a network authentication method” drop-down box.
- 3) Click on the “Settings” button for “Microsoft: Protected EAP (PEAP)”

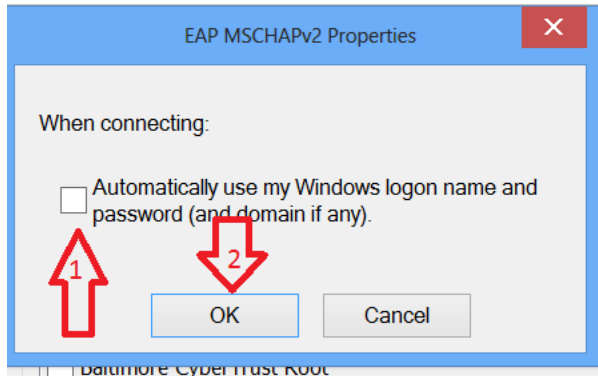


Clear the setting for “Verify the servers’ identity ...”

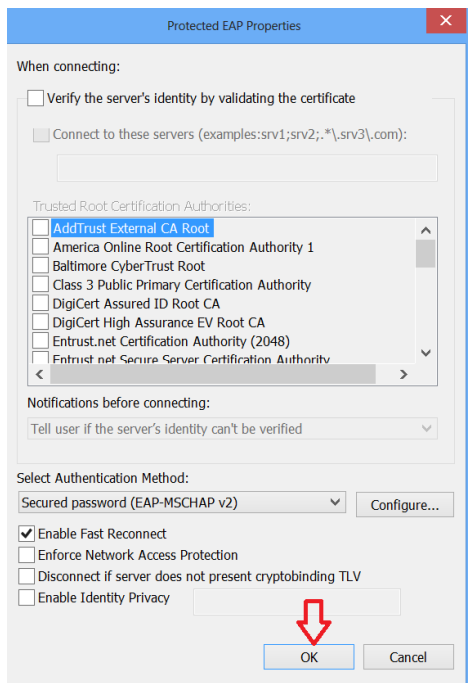
- 1) Click the “Configure” button for “Secured password (EAP-MSCHAP v2)”



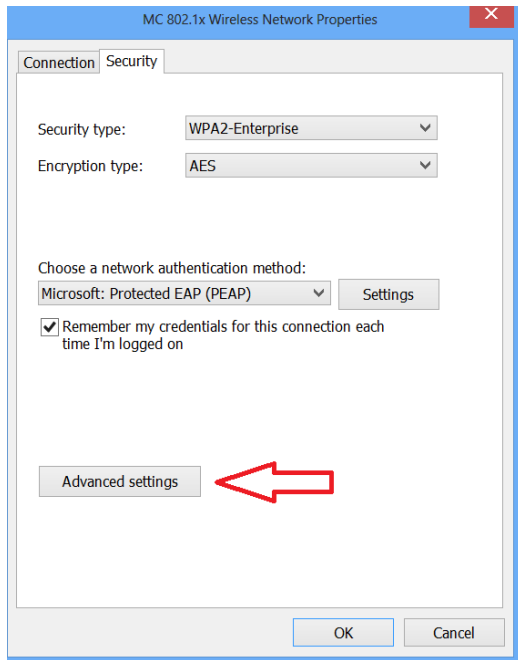
- 1) Disable, by clearing the check box, “Automatically use my Windows logon name...”
- 2) Click “Ok”



Click “Ok” on the “Protected EAP Properties” page

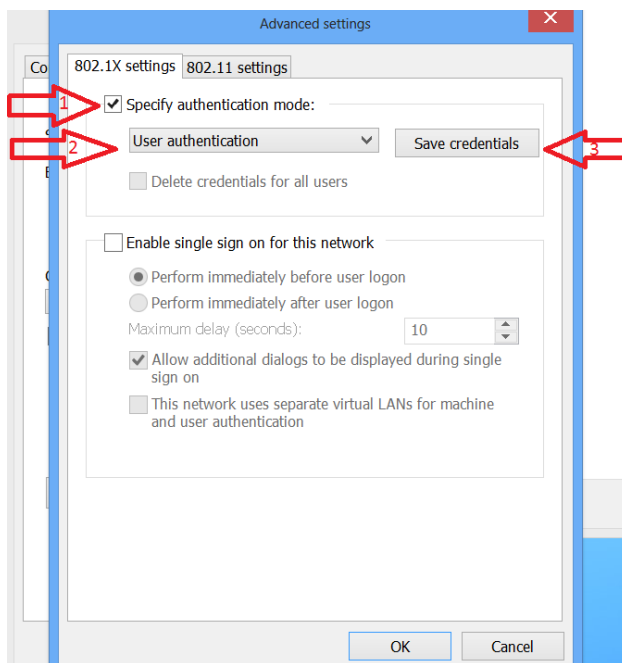


Click “Advanced Settings” on the “Wireless Network Properties” page



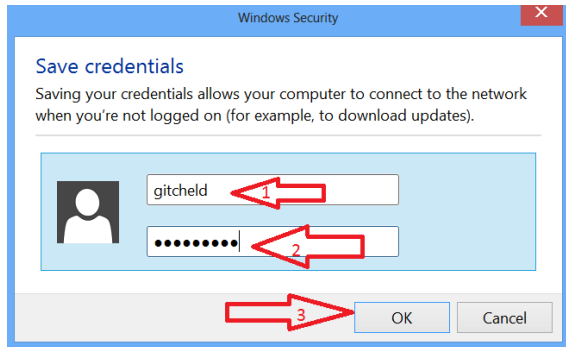
Turn on “Specify authentication mode”

- 1) Select “User authentication” from the drop-down box
- 2) Click “Save Credential” button

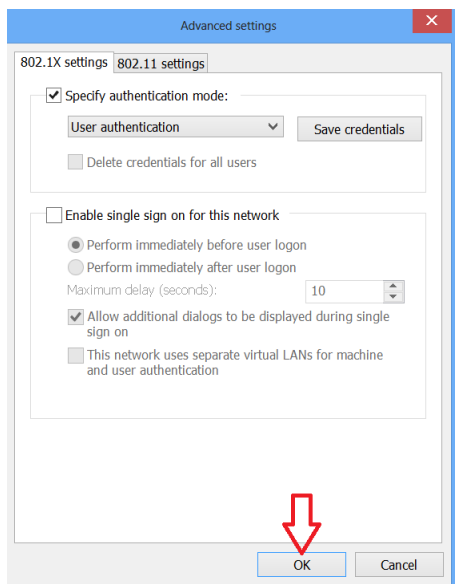


## Enter your campus login credentials

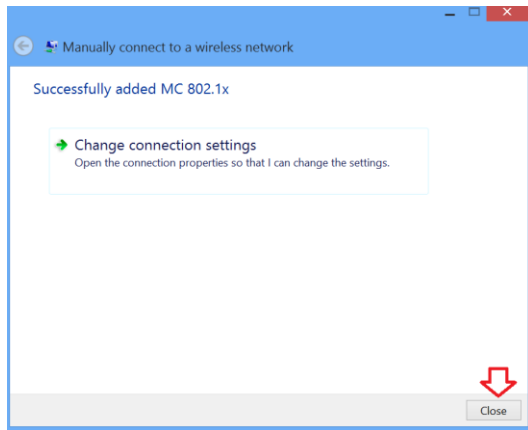
- 1) User name you use to log on to campus computers
- 2) The password that goes with that user name
- 3) Click "OK"



Click "OK" on the "Advanced settings" page.



Finally, click “Close” on the “Manually connect to a wireless network” page.



If your wireless doesn't automatically connect to “MC 802.1x” at this point, double-click on the wireless icon, select “MC 802.1x” from the list of wireless access points available, and then click “Connect”.

