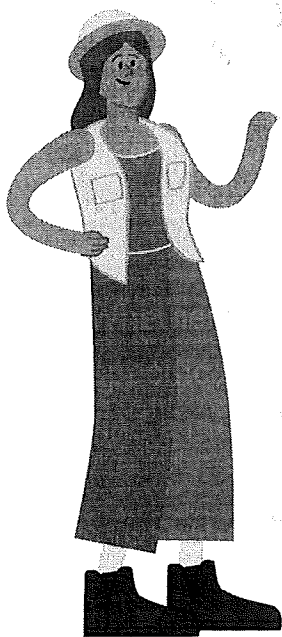


Helping you find the right mental health care.

Deciding to seek care is a brave first step. We are here to help you connect with a provider that's right for you.

Whether it's your first time looking for care, or you have something specific in mind, we can help guide you through the search process to find a mental health provider that is a perfect fit for you.

Visit bcbsks.miresource.com to find care today.



Blue Cross Blue Shield of Kansas
 Search by ZIP code

Provider Search

Maria Velazquez
 Licensed Marriage and Family Therapist (LMFT)

I am a Marriage and Family Therapist. I provide empathetic and nonjudgmental support tailored to what you are needing. I work with individuals, couples, and families. I often work with clients who need support with anxiety, depression, relationships, and life transitions. I specialize in trauma therapy and EMDR.

Phone: (913) 664-4444 | Email: [redacted]

Specialty: Anxiety, Depression, Family Therapy, Trauma, Life Transitions, EMDR, Post-Traumatic Stress Disorder

Practice hours (PST)

Day	Mon	Tue	Wed	Thu	Fri	Sat
Office	10:00 am - 6:00 pm	10:00 am - 2:00 pm	10:00 am - 6:00 pm	10:00 am - 2:00 pm	10:00 am - 6:00 pm	closed
Home		4:00 pm - 7:00 pm		2:00 pm - 6:00 pm		

Areas of focus

Top areas of focus

- Complex Anxiety
- Self
- Family/Relationships/Emotional

Buttons: Schedule appointment, View specialties, Early financial/behavioral and other services, In-person/online/phone/telehealth services, Insurance, Services Blue Shield offers



Blue Cross and Blue Shield of Kansas is an independent licensee of the Blue Cross Blue Shield Association. BLUE CROSS®, BLUE SHIELD® and the Cross and Shield Symbols are registered service marks of the Blue Cross Blue Shield Association, an association of independent Blue Cross and Blue Shield Plans. Blue Cross and Blue Shield of Kansas contracts with MiResource to provide mental health resources to members. MiResource is unaffiliated with Blue Cross and Blue Shield of Kansas.